



## ***QUICK FACTS***

### **About Our Students during the 2007/2008 Academic Year**

#### **Fall Semester 2007:**

- 55% of students enrolled on a full-time basis; 45% on a part-time basis
- 66% of students were female; 46% were minorities (minorities are considered any ethnicity except Caucasian)

*Source: CHE for enrollment, gender and ethnicity information. Crystal Report XENS as of 4/4/08 for residency data.*

#### **Spring Semester 2008:**

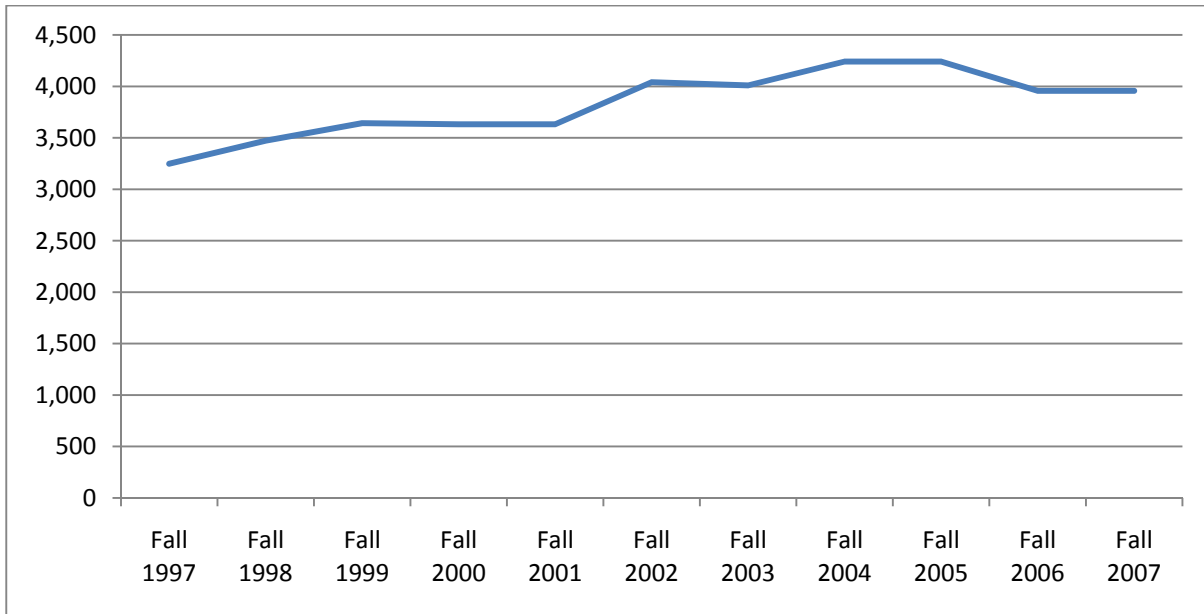
- 53% of students enrolled on a full-time basis; 47% on a part-time basis
- 67% of students were female; 49% were minorities (minorities are considered any ethnicity except Caucasian)

*Source: Crystal Report XEFP as of 4/4/08 for enrollment information, Student Tracking (Demographics) as of 3/31/08 for gender and ethnicity data, and XENS as of 4/4/08 for residency data.*

## FDTC Historical Information / Trends

### *Historical Enrollment*

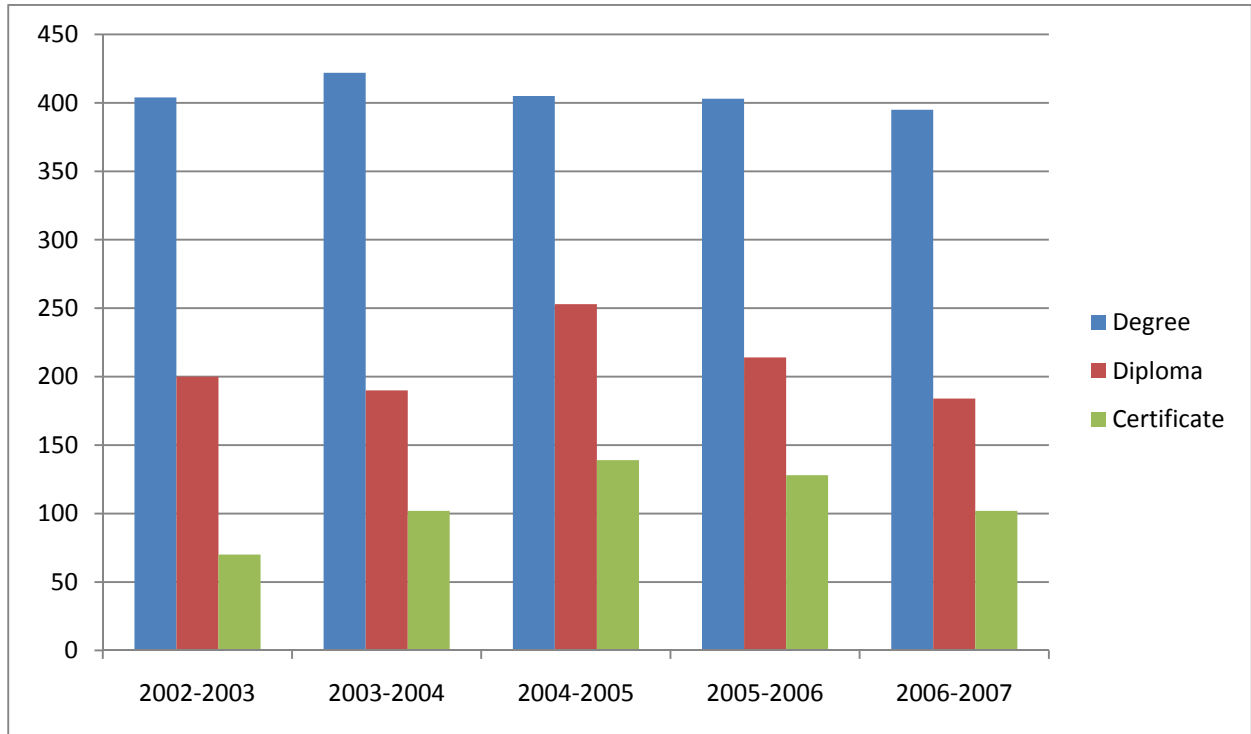
Fall 1997	Fall 1998	Fall 1999	Fall 2000	Fall 2001	Fall 2002	Fall 2003	Fall 2004	Fall 2005	Fall 2006	Fall 2007
3,248	3,472	3,643	3,814	3,632	4,041	4,009	4,241	4,241	3,957	3,956



Source: CHE

### Graduates by Award Type

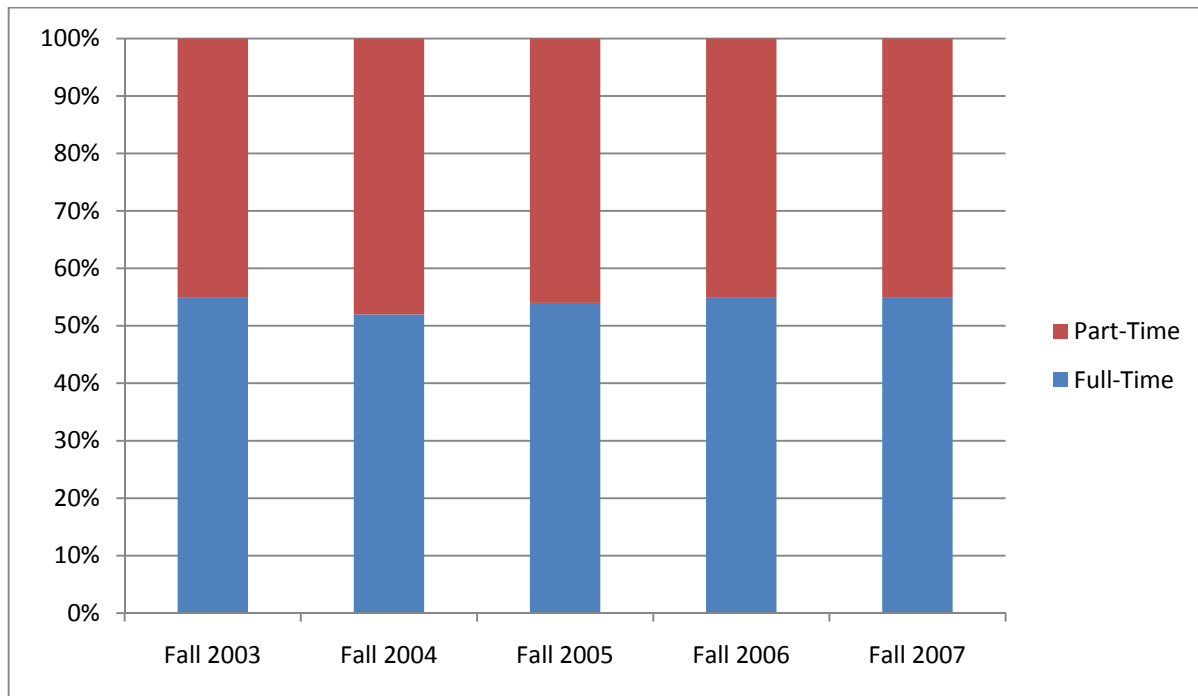
	2002 - 03	2003 - 04	2004 - 05	2005 - 06	2006 - 07
<b>Degree</b>	404	422	405	403	395
<b>Diploma</b>	200	190	253	214	184
<b>Certificate</b>	70	102	139	128	102
<b>Total Graduates</b>	674	714	797	745	681



Source: CHE

### **Full-Time and Part-Time Student Enrollment: Percentage of Total Enrollment**

	<b>Full-Time Students</b>	<b>Part-Time Students</b>
<b>Fall 2003</b>	55%	45%
<b>Fall 2004</b>	52%	48%
<b>Fall 2005</b>	54%	46%
<b>Fall 2006</b>	55%	45%
<b>Fall 2007</b>	55%	45%

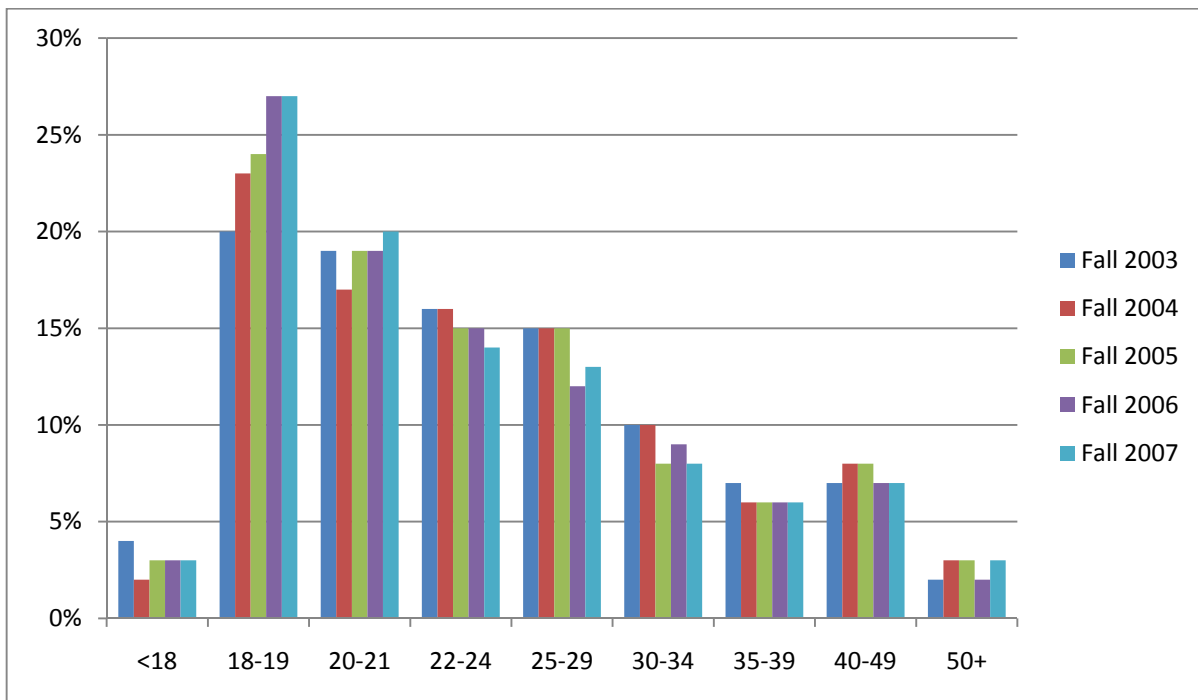


Source: CHE

**Student Body Enrollment By Age: Age Group Percentage of Total Enrollment\***

	Fall 2003	Fall 2004	Fall 2005	Fall 2006	Fall 2007
<18	4%	2%	3%	3%	3%
18-19	20%	23%	24%	27%	27%
20-21	19%	17%	19%	19%	20%
22-24	16%	16%	15%	15%	14%
25-29	15%	15%	15%	12%	13%
30-34	10%	10%	8%	9%	8%
35-39	7%	6%	6%	6%	6%
40-49	7%	8%	8%	7%	7%
50+	2%	3%	3%	2%	3%

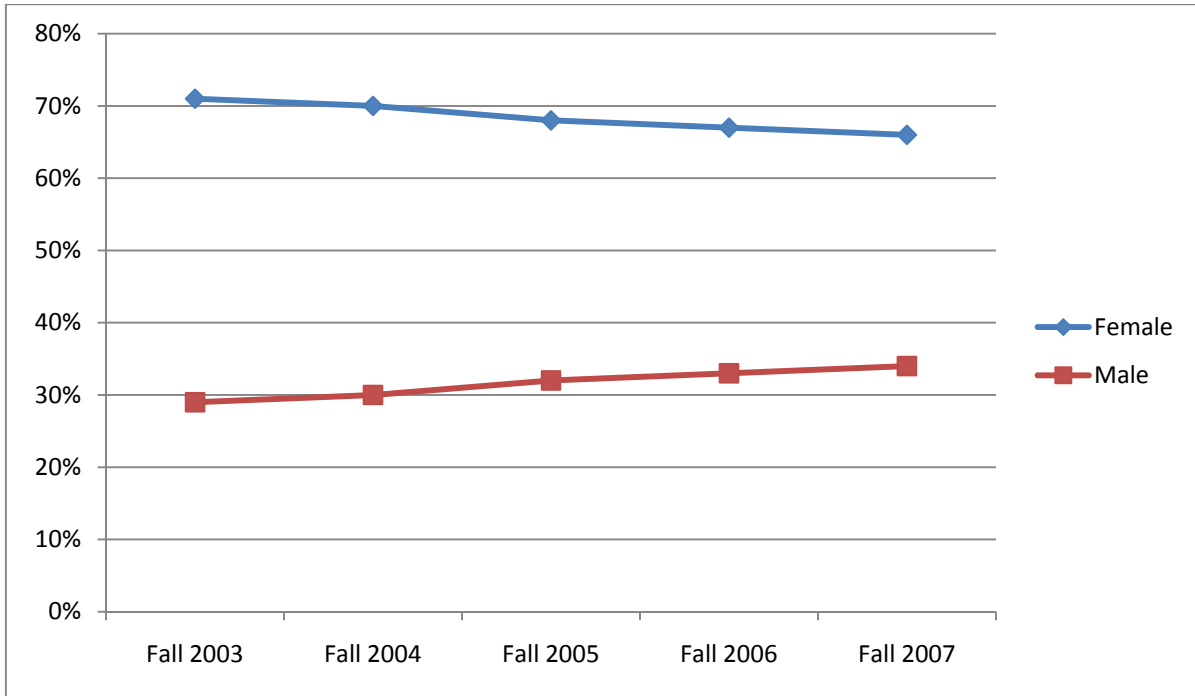
\*Totals may not equal 100% due to rounding



Source: CHE

### ***Gender: Percent of Total Student Enrollment***

	<b>Fall 2003</b>	<b>Fall 2004</b>	<b>Fall 2005</b>	<b>Fall 2006</b>	<b>Fall 2007</b>
<b>Female</b>	71%	70%	68%	67%	66%
<b>Male</b>	29%	30%	32%	33%	34%

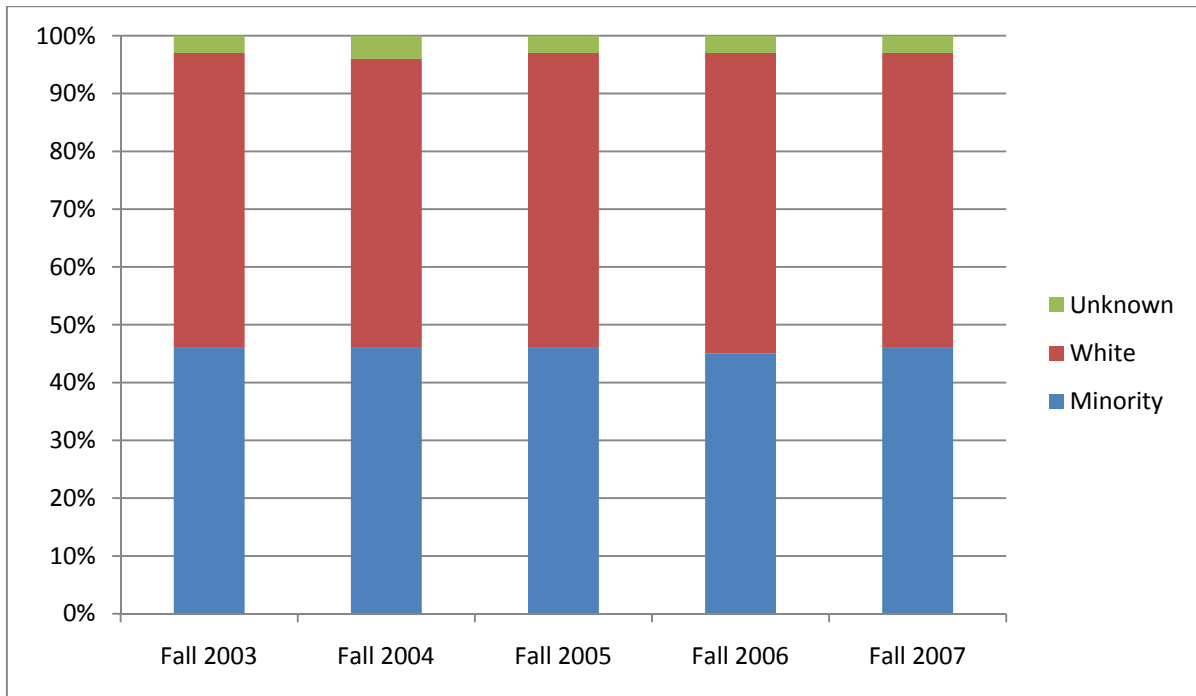


Source: CHE

### Ethnicity: Percent of Total Student Enrollment\*

	Fall 2003	Fall 2004	Fall 2005	Fall 2006	Fall 2007
<b>Minority</b>	46%	46%	46%	45%	46%
<b>Non-Minority</b>	51%	50%	51%	52%	51%
<b>Unknown</b>	3%	4%	3%	3%	3%

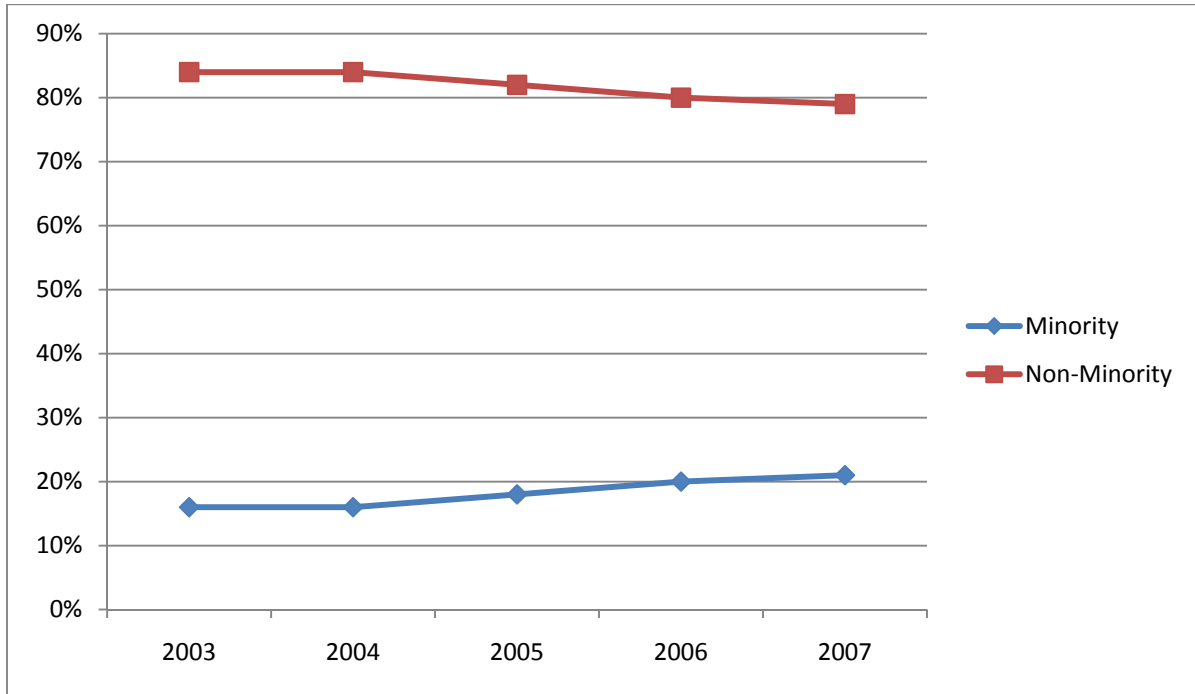
\*Totals may not equal 100% due to rounding



Source: CHE

### Faculty Members by Ethnicity

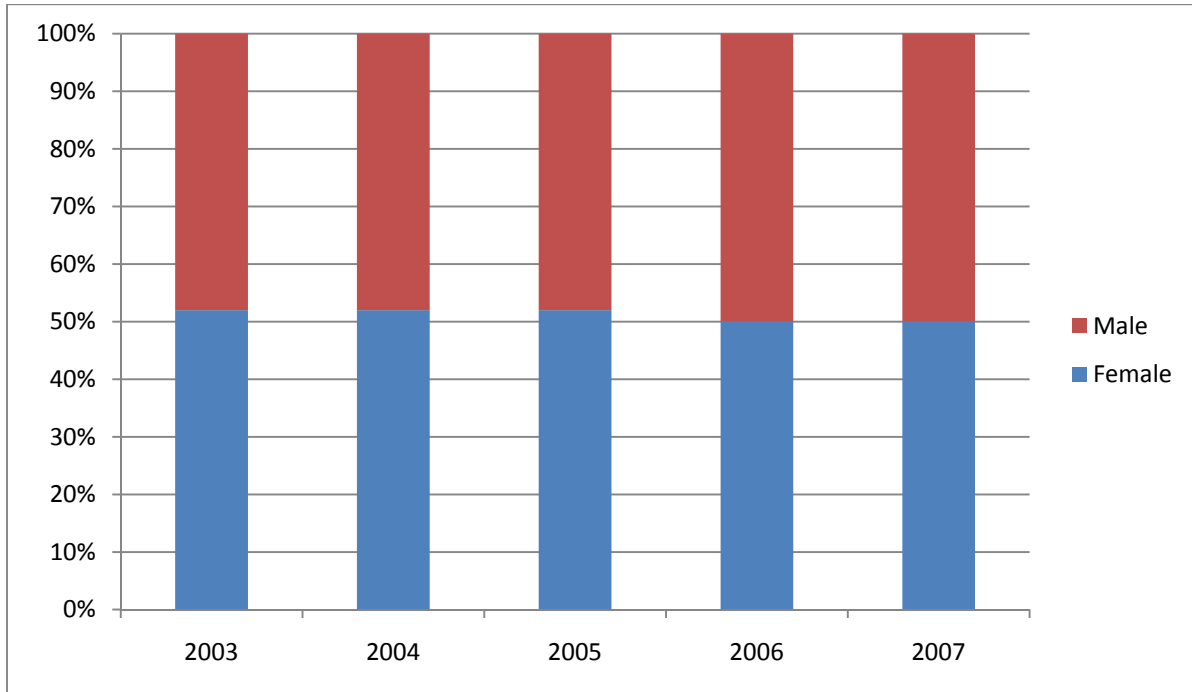
	2003	2004	2005	2006	2007
<b>Minority</b>	16%	16%	18%	20%	21%
<b>Non-Minority</b>	84%	84%	82%	80%	79%



Source: CHE

### ***Faculty Members by Gender***

	<b>2003</b>	<b>2004</b>	<b>2005</b>	<b>2006</b>	<b>2007</b>
<b>Female</b>	52%	52%	52%	50%	50%
<b>Male</b>	48%	48%	48%	50%	50%



Source: CHE

## Student Right-To-Know Information

- Public Law 101-542 as amended by Public Law 102-26, the Higher Education Amendments of 1991 is known as the Student Right-to-Know and Campus Security Act. This Act requires institutions to produce and make readily available to current students, and to each prospective student enrolling or entering into any financial obligation, the completion or graduation rate of certificate or degree-seeking full-time undergraduates students entering the institution. Each institution will also publish and distribute crime statistics.
- The Florence-Darlington Technical College cohort, instituted by the State Board for Technical and Comprehensive Education in 1991, tracks full-time, first-time students seeking a degree or certificate. The cohort follows a four year period and reflects a Fall to Fall assessment.
- The completion rates below reflect ONLY members of the cohort who completed a program of study within 150% of “normal time.” “Normal time” is defined as the amount of time necessary for a student to complete all course requirements for a degree or certificate program.

Year	Number in Cohort	Cohort Completers within 150% of Normal Time
Fall 2001	549	9%
Fall 2002	587	14%
Fall 2003	601	15%
Fall 2004	699	10%
Fall 2005	723	<i>Not Yet Available</i>
Fall 2006	733	<i>Not Yet Available</i>

- Total College enrollment and graduates for the same periods are listed below:

Academic Year	Fall Enrollment	Annual Graduates
2001 – 2002	3,632	668
2002 – 2003	4,041	674
2003 – 2004	4,009	714
2004 – 2005	4,241	797
2005 – 2006	4,241	745
2006 – 2007	3,957	681
2007 – 2008	3,956	<i>Not Yet Available</i>