



## ***QUICK FACTS***

### About Our Students during the 2010/2011 Academic Year

#### **Fall Semester 2010**

- 54% of students enrolled on a full-time basis; 46% on a part-time basis
- 67% of students were female; 50% were minorities (minorities are considered any ethnicity except Caucasian)
- Where our students came from:
  - 78% Darlington, Florence or Marion County
  - 20% Other South Carolina Counties
  - 2% Out of State

Source: Crystal Student Tracking Report as of 10-11-2010

#### **Spring Semester 2011:**

- 53% of students enrolled on a full-time basis; 47% on a part-time basis
- 67% of students were female; 48% were minorities (minorities are considered any ethnicity except Caucasian)
- Where our students came from:
  - 77% Darlington, Florence or Marion County
  - 20% Other South Carolina Counties
  - 2% Out of State

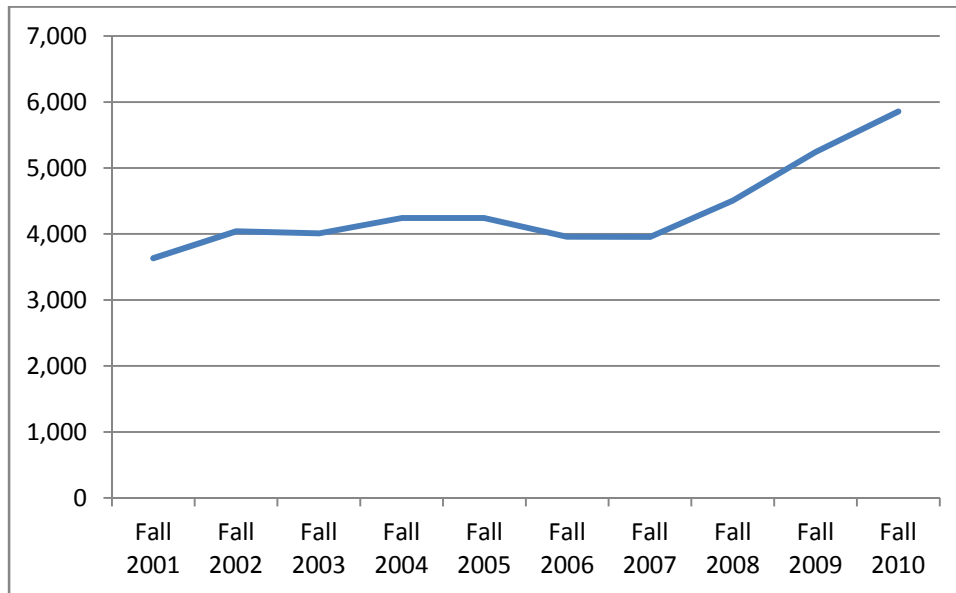
Totals may not equal 100% due to rounding

Source: Crystal Student Tracking Report as of 3-14-2011

## FDTC Historical Information / Trends

### **Historical Enrollment**

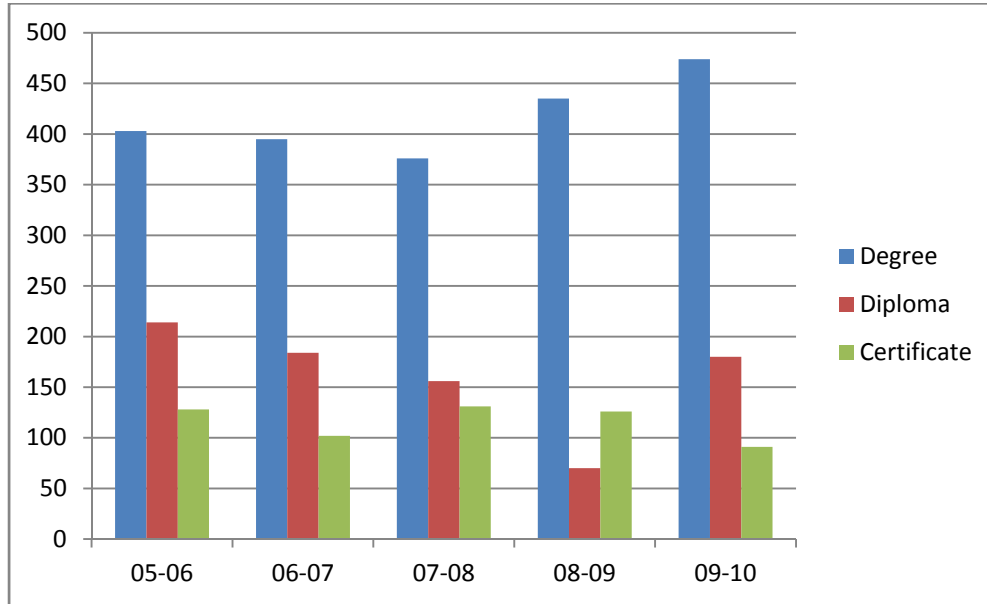
<b>Fall 2001</b>	<b>Fall 2002</b>	<b>Fall 2003</b>	<b>Fall 2004</b>	<b>Fall 2005</b>	<b>Fall 2006</b>	<b>Fall 2007</b>	<b>Fall 2008</b>	<b>Fall 2009</b>	<b>Fall 2010</b>
3,632	4,041	4,009	4,241	4,241	3,957	3,956	4,505	5,242	5,855



Source: CHE

### Graduates by Award Type

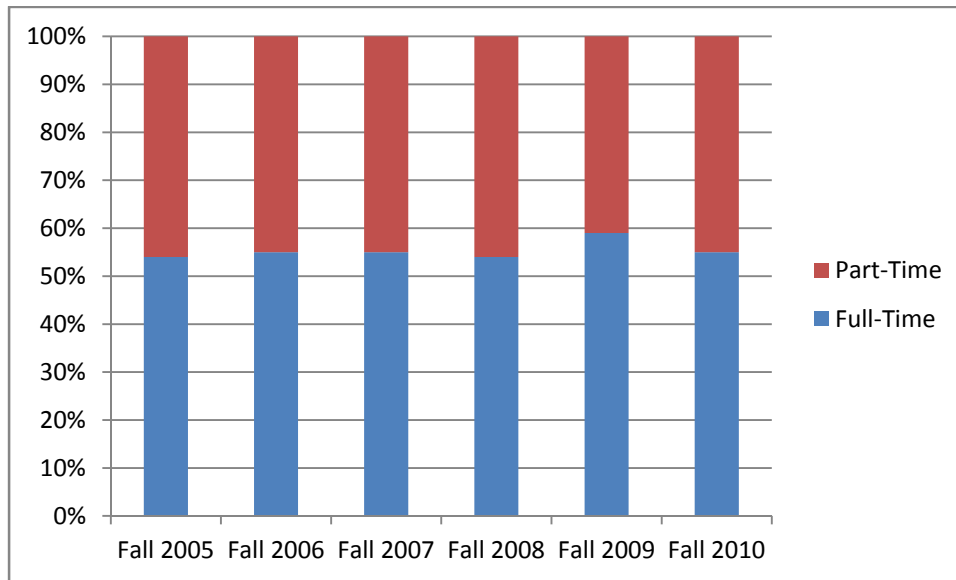
	2005-2006	2006-2007	2007-2008	2008-2009	2009-2010
<b>Degree</b>	403	395	376	435	474
<b>Diploma</b>	214	184	156	70	180
<b>Certificate</b>	128	102	131	126	91
<b>Total Graduates</b>	745	681	663	631	745



Source: CHE

### **Full-time and Part-Time Student Enrollment: Percentage of Total Enrollment**

	<b>Full-Time Students</b>	<b>Part-Time Students</b>
<b>Fall 2005</b>	54%	46%
<b>Fall 2006</b>	55%	45%
<b>Fall 2007</b>	55%	45%
<b>Fall 2008</b>	54%	46%
<b>Fall 2009</b>	59%	41%
<b>Fall 2010</b>	55%	45%

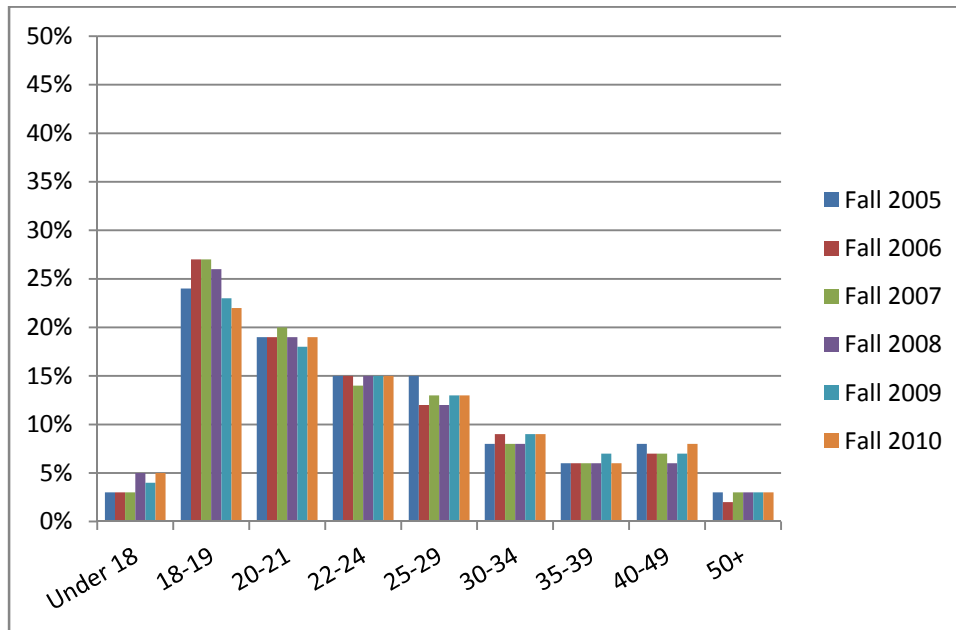


Source: CHE

### Student Body Enrollment by Age: Age Group Percentage of Total Enrollment\*

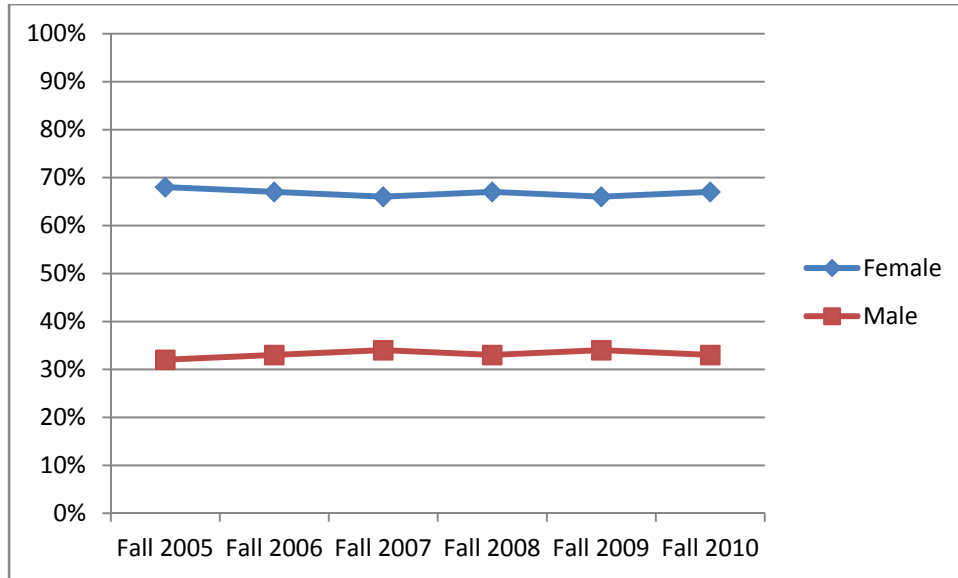
	Fall 2005	Fall 2006	Fall 2007	Fall 2008	Fall 2009	Fall 2010
<b>Under 18</b>	3%	3%	3%	5%	4%	5%
<b>18 – 19</b>	24%	27%	27%	26%	23%	22%
<b>20 – 21</b>	19%	19%	20%	19%	18%	19%
<b>22 – 24</b>	15%	15%	14%	15%	15%	15%
<b>25 – 29</b>	15%	12%	13%	12%	13%	13%
<b>30 – 34</b>	8%	9%	8%	8%	9%	9%
<b>35 – 39</b>	6%	6%	6%	6%	7%	6%
<b>40 – 49</b>	8%	7%	7%	6%	7%	8%
<b>50+</b>	3%	2%	3%	3%	3%	3%

\*Totals may not equal 100% due to rounding



Source: CHE

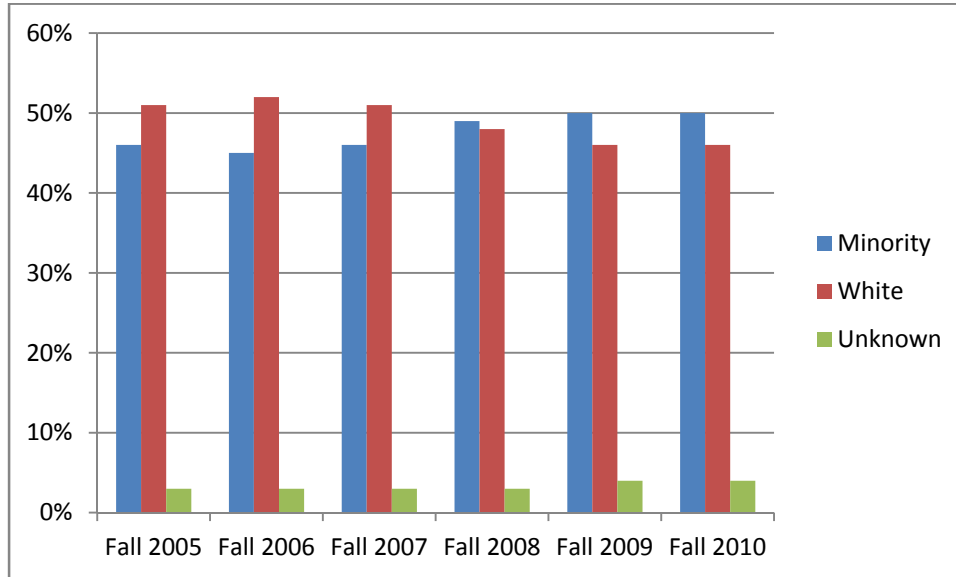
<b>Student Gender: Percent of Total Enrollment</b>						
	Fall 2005	Fall 2006	Fall 2007	Fall 2008	Fall 2009	Fall 2010
<b>Female</b>	68%	67%	66%	67%	66%	67%
<b>Male</b>	32%	33%	34%	33%	34%	33%



Source: CHE

### Student Ethnicity: Percent of Total Enrollment

	Fall 2005	Fall 2006	Fall 2007	Fall 2008	Fall 2009	Fall 2010
Minority	46%	45%	46%	49%	50%	50%
White	51%	52%	51%	48%	46%	46%
Unknown	3%	3%	3%	3%	4%	4%



Source: CHE

<b>Faculty Members by Ethnicity</b>								
	<b>2003</b>	<b>2004</b>	<b>2005</b>	<b>2006</b>	<b>2007</b>	<b>2008</b>	<b>2009</b>	<b>2010</b>
<b>Minority</b>	16%	16%	18%	20%	21%	23%	23%	26%
<b>White</b>	84%	84%	82%	80%	79%	77%	77%	74%

Source: FDTC EEO Report

---

<b>Faculty Members by Gender</b>								
	<b>2003</b>	<b>2004</b>	<b>2005</b>	<b>2006</b>	<b>2007</b>	<b>2008</b>	<b>2009</b>	<b>2010</b>
<b>Female</b>	52%	52%	52%	50%	50%	51%	52%	52%
<b>Male</b>	48%	48%	48%	50%	50%	49%	48%	48%

Source: FDTC EEO Report

## Student Right-To-Know Information

- Public Law 101-542 as amended by Public Law 102-26, the Higher Education Amendments of 1991 is known as the Student-Right-To-Know and Campus Security Act. This Act requires institutions to produce and make readily available to current students, and to each prospective student enrolling or entering into any financial obligation, the completion or graduation rate of certificate or degree-seeking full-time undergraduate students entering the institution. Each institution will also publish and distribute crime statistics.
- The Florence-Darlington Technical College cohort, instituted by the State Board for Technical and Comprehensive Education in 1991, tracks full-time, first-time students seeking a degree or certificate. The cohort follows a four-year period and reflects a fall-to-fall assessment.
- The completion rates below reflect ONLY members of the cohort who completed a program within 150% of “normal time.” “Normal time” is defined as the amount of time necessary for a student to complete all course requirements for a degree or certificate program. In this instance, 150% of “normal time” equals three years.

<u>Year</u>	<u>Number in Cohort</u>	<u>Cohort Completers within 150% of Normal Time</u>	<u>Percent of Cohort who Transferred Out</u>
Fall 2003	601	15%	10%
Fall 2004	699	10%	10%
Fall 2005	723	13%	10%
Fall 2006	733	11%	10%
Fall 2007	789	13%	10%
Fall 2008	805	Not Yet Available	Not Yet Available
Fall 2009	1,006	Not Yet Available	Not Yet Available

- Total College enrollment and graduates for the same periods are listed below:

<u>Academic Year</u>	<u>Fall Enrollment</u>	<u>Annual Graduates</u>
2003 – 2004	4,009	714
2004 – 2005	4,241	797
2005 – 2006	4,241	745
2006 – 2007	3,957	681
2007 – 2008	3,956	663
2008 – 2009	4,505	631
2009 – 2010	5,242	745
2010 – 2011	5,855	Not Yet Available